

Ravenscroft

NURSERY SCHOOL

April 2026 Newsletter



Look Who's 4 !!

Happy Birthday to

Greyli

Reuben

Coby



Look Who's 5 !!

Fionn

Dear Parents

The school will be closed for Easter holidays from Wednesday, 1st April to Monday, 13th April.

We will reopen on Tuesday, 14th April at 9am. (Morning room 8:30)

TEACHER



You will soon receive a progress report for your child. This will be in digital format though you'll be able to print off a copy of it yourself should you wish to do so.

Mrs Symington will be available on the 11th & 13th of May for Parent Teacher meetings for Nursery 1, from 2 or 2.30pm onwards should you wish to sign up for a slot.

For Nursery 2, Slots will be available for Thursday 7th & 14th May if you wish to sign up for a meeting with Mrs Mc Kenna.

Slots will be available from Thursday April 16th, we'll post a link up on seesaw.



Dates for your diary:

1st April through 13th April - Easter Break

14th April - School returns

21st April - Music Fundamentals parents workshop

22nd April - Earth Day Celebration by children in school

24th April - we will have our first visit to [Forest Schools](#) Nursery 1 children

28th April - Music Fundamentals parents workshop

30th April - we will have our first visit to [Forest Schools](#) Nursery 2 children

1st - 4th May - School CLOSED for the bank holiday

5th May - Music fundamentals parents workshop

7th May - Parent teacher meetings with Mrs McKenna

11th May - Parent teacher meetings with Mrs Symington, 2.30-4.40pm

12th May - Graduation photos

13th May - Parent teacher meetings with Mrs Symington 8.30-9.30am and 2.30-4.40pm

14th May - Parent teacher meetings with Mrs McKenna

15th, 29th May and 12th June - [Forest Schools](#) both classes

20th May - Jump, Jiggle, and Jive for children for World Bee Day

21st May - Both classes visit to the [Ulster Museum](#)

22nd - 25th May - School CLOSED for bank holiday

28th May - The Bee Musical Performance 1pm, parents welcome

4th June - Grandparent's Day 10.00am - 11.30am, grandparents welcome

17th June - Ronnie's Relays, parents welcome N1 = 9.30-10.15am, N2 = 10.45-11.30am

18th June- Tiger Who Came to Tea Party, parents welcome

19th June - Pamper Day for children

26th June - Mr Giggles will be paying us a visit

30th June - [Mr Hullabaloo](#) will be paying us a visit

30th June - School CLOSES at 11:30am for the summer

We have added in some extra events so do check your diaries for events not already put out on previous newsletters. Please don't feel under pressure to attend every event but hopefully there's enough of a mix to allow you all to dip into something around your work schedules. Where we have added parents welcome, this applies to extended family members also.



BAMT BRITISH ASSOCIATION
FOR MUSIC THERAPY

We are very excited to confirm that our Music Fundamentals parents sessions/workshops will begin next Tuesday and run for three consecutive weeks, from drop off time. They will last approx one hour.

Please sign up using this link:

[I would like to attend the music fundamentals parents sessions please – Fill in form](#)



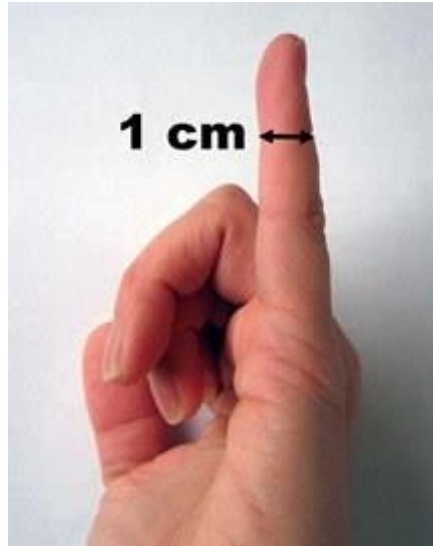
Nursery 1 will have our first visit to [Forest Schools](#) on Friday, the 24th of April, followed by the Nursery 2 on the 30th of April. Both classes will go on the 15th and 29th of May, as well as the 12th of June.

Packed lunches will be provided for the children.

It's a good idea to send welly boots if you have them, if not, definitely sturdy shoes and a complete change of clothes in a labelled & tied plastic bag please. We'll have waterproofs with us but anything can happen in a Forest Schools Day.

It's a very tight turn around time to get everyone on the bus and away to Clandeboye so please, please get your child into school on time on those days.

In previous years we've run a bit late getting back from this venue as well so please let anyone picking your child upon these days know this may be the case again.



We'll be measuring lots of things but mostly ourselves, using non standard units of measurement. If you see our 'Hands Tall' chart around the school, why not measure yourself, we'd be glad to take a photo for your child to keep. We can use other things to measure as well, what else can you think of?

We'll be doing lots of planting and observing growth and change outdoors, continuing our themes of spring/new life/growth.



We are learning some lovely songs and makaton signs about bees. We look forward to singing & signing them for you during our Bee Musical Performance to be held on May 28th in school.

We have made a few changes to the school day for the children. As we move towards warmer, sunnier weather, we go outside earlier in the day. The children will still come in and self register but will then go to the quiet room for morning greeting and storytime. Following this they go outside for learning through play until 11.30am. It's a lovely time of year for everyone. It does mean that once the sun finally arrives, your child will need to have sunscreen applied each morning before arriving at school. Staff do not routinely apply sunscreen but we'll have a bottle on hand in the case of it being forgotten the odd time or two. Please send a sunhat and if you wish, sunglasses.

A massive thank you to everyone who sent in sponsor monies, we are so very grateful for all of your support. We have banked all cash received to date and once any outstanding contributions have been received, and any bank transfers are added in, we'll be able to bring you a total. We are happy to receive any sponsor money not already sent in, Thanks.

The songs we sang at the singalong are from 'Out of the Ark', they are copyrighted and we have to purchase a license even to do our performance. We have taken some video footage of the children's rehearsal (they usually sing more freely without an audience in front of them) so we'll share that in the next day or two. Our bee musical performance is also 'Out of the Ark' so we won't be able to share the songs but will put a little footage out on seesaw.



1 - Cartoon Ronnie the Raven



2 - Lola the Tiger

The children will enjoy their [Time to Talk](#) programme and will be introduced to some more focused work after dinner each day - this will be language work, emotional literacy and attention and listening work, all a good rounding off to a nursery year. We have some lovely programmes to support these aspects of development, the children will get to meet the characters on whom these programmes are based, they are friends of Ronnie the Raven.



3 - Ginger Bear



4 - Dogum



5 - Mr Tig Tog

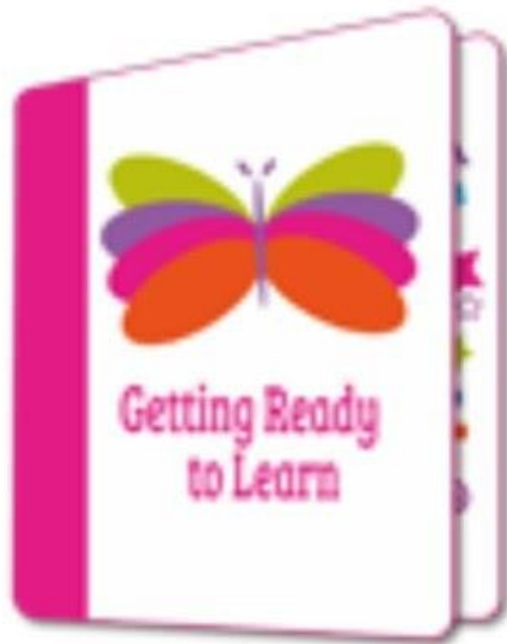


6 - Sleepy Star

Superworm Alert

Our wormery is thriving with some definite contenders for Superworm emerging. The children will be exploring this theme further over the next few weeks. Here is Eithne the Explorer judging the Superworm contest at Ravenscroft...



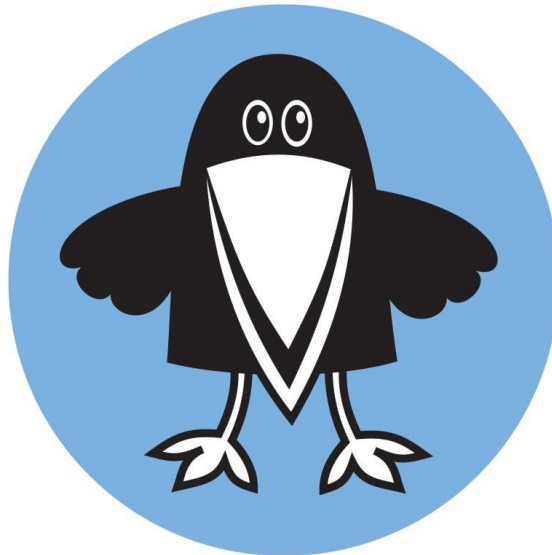


Why don't you see what's new at [Getting Ready to Learn?](#)

TOGETHERNESS

Bringing the Solihull Approach to the world

Falling out and making up



7 - *Home | Ravenscroft Nursery School*